



# KIN Coffee Mornings

## 2026

### TE AWAMUTU

**11.00am - 1.00pm on the 2nd Thursday of the month**

St Patricks Parish Hall, 625 Alexandra Street, Te Awamutu

● 11 Jun    ● 13 Aug    ● 10 Sep    ● 12 Nov

**10.30am - 12.30pm on the last Tuesday of the month**

Te Kuiti Community House, 28 Taupiri Street, Te Kuiti

● 30 Jun    ● 28 Jul    ● 25 Aug    ● 27 Oct    ● 24 Nov

### TE KUITI

### BADER

**10.00am - 12.00pm on the 3rd Thursday of the month**

Te Whare Kokonga - Melville Community House, 58 Bader Street, Hamilton

● 18 Jun    ● 20 Aug    ● 17 Sep    ● 15 Oct    ● 19 Nov

**10.00am - 12.00pm on the 1st Friday of the month**

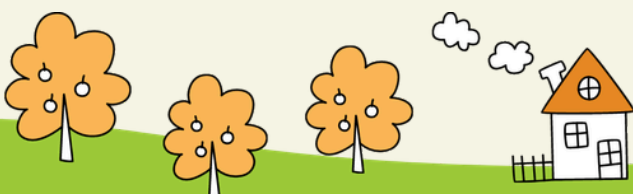
Discovery Christian Centre, corner of Insoll Ave and Peachgrove Road, Hamilton

● 5 Jun    ● 3 Jul    ● 7 Aug    ● 4 Sep    ● 6 Nov

### INSOLL AVE

**Please note:** These are adult-only groups to allow for open conversation (that might not be suitable for children to hear) and a break from caregiving duties.

For more information contact Nicola Silcock - [nicola@kidsinneed.co.nz](mailto:nicola@kidsinneed.co.nz) or 027 502 3891





# KIN Coffee Mornings

## 2026

### TOKOROA

**10.30am - 12.30pm on the 4th Tuesday of the month**

St Mark's, Bridge St, Tokoroa

- 24 Mar
- 28 Apr
- 26 May
- 23 Jun
- 28 Jul
- 25 Aug
- 22 Sep
- 27 Oct
- 24 Nov

**Regional Coordinator:** Gail (022 150 1182)  
tokoroa@kidsinneed.co.nz

**12.30pm - 2.00pm on the 2nd Monday of the month**

St Paul's Church Hall, 64 Kensington St, Putaruru

- 10 Aug
- 14 Sept
- 12 Oct
- 9 Nov

**Regional Coordinator:** Vanessa (022 150 1180)  
putaruru@kidsinneed.co.nz

### PUTARURU

### ROTORUA

**10.00am - 12.00pm on the 4th Friday of the month**

Linton Park Community Centre, 16 Kamahi Place, Rotorua

- 25 Mar
- 24 Apr
- 22 May
- 26 Jun
- 24 Jul
- 28 Aug
- 25 Sep
- 23 Oct
- 27 Nov

**Regional Coordinators:** Lena and Phil (022 028 8550)  
rotorua@kidsinneed.co.nz

**Please note:** These are adult-only groups to allow for open conversation (that might not be suitable for children to hear) and a break from caregiving duties.

For more information contact Nicola Silcock - nicola@kidsinneed.co.nz or 027 502 3891

